

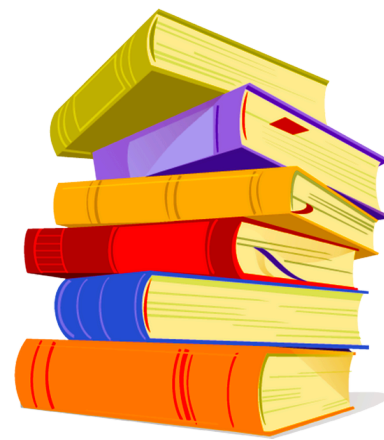


Ministry of Health & Family Welfare  
Government of India

# ALL INDIA INSTITUTE OF MEDICAL SCIENCES BATHINDA

## CENTRAL LIBRARY

**E-NEWSLETTER**  
(A TRI-ANNUAL ISSUE)





**Prof.(Dr) Anil Kumar Gupta**  
President  
AIIMS, Bathinda



**Prof.(Dr) Dinesh Kumar Singh**  
Founding Executive Director  
AIIMS Bathinda



**Prof.(Dr) Meenu Singh**  
Executive Director  
Add. Charge  
AIIMS, Bathinda

## Library Committee



**Prof.(Dr.)  
Rakesh Kakkar**

PROFESSOR & HOD,  
DEPT. OF CFM  
OIC, CENTRAL LIBRARY



**Dr. Jitendra  
Aneja**

ADDITIONAL  
PROFESSOR, DEPT. OF  
PSYCHIATRY



**Dr. Dipti  
Magan**

ASSOCIATE  
PROFESSOR, DEPT. OF  
PHYSIOLOGY



**Dr. Ankita  
Kankaria**

ASSOCIATE  
PROFESSOR, DEPT.  
OF CFM



**Dr.Sivanantham  
K.**

ASSOCIATE  
PROFESSOR, DEPT. OF  
MICROBIOLOGY



# NEWS LETTER

## Central Library AIIMS Bathinda

The Central Library AIIMS Bathinda is The most significant asset for students, medical professionals, and the community. About 14,000 medical volumes, e-resources, research tools (such as iThenticate, Grammarly, EndNote, and SPSS), Myloft for remote access, and RFID technology for circulation are all provided by the Central Library. Providing the AIIMS Bathinda community with up-to-date central library activities through the publication of the TRI-annual issue of the E-Newsletter.

E-Newsletter from the Central Library: Three issues have been released. A weekly newspaper clipping service is provided to keep the AIIMS, Bathinda fraternity up to date on medical news, medical technologies, medical policies, international medical news, and science and technology.

## Table of Content

### Library E-Resources

03

### Research Tools

04

### ERMED Consortium

05

### Did you know ?

06

### SERVICES & FACILITIES

07

### OPAC

08

### BMJ Research to Publication

10

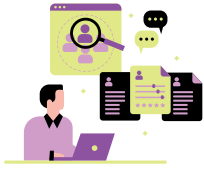
### Event

11

### Feedback

12





## Library E-Resources



BMJ

BMJ journals .....	<a href="https://journals.bmj.com/home">https://journals.bmj.com/home</a>
BMJ case report .....	<a href="https://casereports.bmj.com">https://casereports.bmj.com</a>
BMJ best practice .....	<a href="https://bestpractice.bmj.com">https://bestpractice.bmj.com</a>
BMJ innovations .....	<a href="https://innovations.bmj.com">https://innovations.bmj.com</a>
BMJ learning .....	<a href="https://new-learning.bmj.com">https://new-learning.bmj.com</a>
BMJ research to publication course .....	<a href="https://rtop.bmj.com">https://rtop.bmj.com</a>



ELSEVIER

Embase .....	<a href="https://www.embase.com">https://www.embase.com</a>
Scopus .....	<a href="https://www.scopus.com">https://www.scopus.com</a>



ERMED Consortium

ERMED .....	<a href="https://www.Ermed.In">https://www.Ermed.In</a>
-------------	---



Thieme MedOne Education

MedOne Education.....	<a href="https://medone-education.thieme.com/society/rO5IWpnRbngmbpGRa42lxPEvJO75Y8WFKCZBmMvG">https://medone-education.thieme.com/society/rO5IWpnRbngmbpGRa42lxPEvJO75Y8WFKCZBmMvG</a>
-----------------------	---



McGrawHill

Access Medicine .....	<a href="https://accessmedicine.Mhmedical.Com">https://accessmedicine.Mhmedical.Com</a>
-----------------------	---



Wolters Kluwer

UpToDate .....	<a href="https://www.Uptodate.Com/login">https://www.Uptodate.Com/login</a>
----------------	---



One Nation One Subscription (ONOS)

ONOS.....	<a href="https://www.onos.gov.in/">https://www.onos.gov.in/</a>
-----------	---

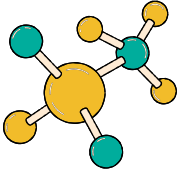


Remote access

My LOFT .....	<a href="https://app.myloft.xyz">https://app.myloft.xyz</a>
---------------	---







## Library Research Tools



Plagiarism Checker

iThenticate .....<https://aiimsbathinda.turnitin.com>



Grammar Checker

Grammarly .....<https://www.Grammarly.com>



Reference Manager

**EndNote:** Endnote is the reference manager that helps you save time formatting citations, so you can focus on your research. At our institute, we utilize Endnote version 21."



Statistics Tool

"SPSS (statistical package for the social sciences), also known as IBM SPSS statistics. At our institute, we utilize SPSS version 29."



Reference  
service

Central Library  
AIIMS Bathinda

CENTRAL LIBRARY, AIIMS BATHINDA

NEED HELP TO  
DOWNLOAD ARTICLES?

TAP HERE

OR

SCAN ME




## ERMED Consortium

National Medical Library's Electronic Resources in Medicine (NML-ERMED) Consortium is an initiative taken by Dte.GHS & MOHFW to develop nationwide electronic information resources in the field of medicine for delivering effective health care. AllMS bathinda is its members. NML-ERMED



Consortium have high quality online e-journals are presently purchased from leading publishers. NML-ERMED Consortium provide MedOne Education and Access Medicine database, e-books and journals for the Central Library, AllMS Bathinda.

### MedOne Education

Thieme Publishers' flagship e-learning platform, MedOne,  **Thieme MedOne Education** Education is now available at our library through ERMED. MedOne Education is specifically designed to support undergraduate students, featuring top-rated color atlases across multiple specialties, texts authored by Indian experts in alignment with the CBME curriculum, and an extensive selection of resources relevant to undergraduate studies. The platform also offers a wealth of multimedia content and a vast repository of Q&A for exam preparation, including for competitive exams like NEET and USMLE.

Access Link: <https://medone-education.thieme.com/society/rO5IWpnRbngmbpGRa42lxPEVJO75Y8WFKCZBmMvG>



### AccessMedicine

Access Medicine is your go-to Access collection of medical learning resources featuring hundreds of books, review questions, cases, videos, podcasts, infographics, interactive 3D modules and more across the basic sciences and clinical specialties.

Access Link: <https://accessmedicine.Mhmedical.Com>



### ERMED JOURNALS

ERMED Consortium provides approximately 300 journals in the field of health and medicine from different publications like BMJ publishing group, Cambridge University Press, Wolters Kluwer - Lippincott Williams & Wilkins. & w. , Wiley-blackwell and Oxford university press. Link to access journals

<https://www.irmed.in/journals.aspx>





## Did you know



### Thanjavur Maharaja Serfoji's Sarasvati Mahal Library and Research Centre

Maharaja Serfoji's Sarasvati Mahal Library and Research Centre Thanjavur Maharaja Serfoji's Sarasvati Mahal Library and Research Centre, one of the ancient libraries in India, established in the year 1535, registered phenomenal growth under the patronage of Maharaja Serfoji (1798-1832). Thanjavur Maharaja Serfoji's Sarasvati Mahal Library and Research Centre which has been functioning under the control of the District Collector of Thanjavur from 1918, has been registered in 1986 under the Tamil Nadu Societies Registration Act, 1975. This library has about 47,334 palm leaves and manuscripts in Tamil, Telugu, Sanskrit, Marathi and English languages. In addition to this, it contains a collection of books, maps, paintings on all aspects of literature, art and culture.

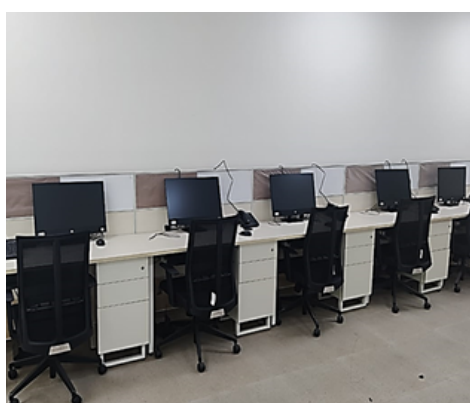


#### Knowledge of the royals

Starting as Thanjavur's Nayak king's royal library, the Sarasvathi Mahal Library is the hub of the region's glorious past. Maratha rulers captured Thanjavur in 1675 and until 1855, the Royal Library was developed. Serfoji, the most notable Maratha king of the region took special interest in enriching the culture of the Royal Library. He was an eminent scholar in several branches of arts and learning. It was German Reverent Schwartz who influenced Serfoji to develop a keen interest in studies. Serfoji employed several priests to collect, buy, and copy a humungous work from all renowned Sanskrit Centres of Northern India and other far-off areas. Since 1918, the state of Tamil Nadu holds the possession of the Sarasvathi Mahal Library. Officially, the library is named in remembrance of the Great Royal Maratha Patron.

## OPAC

## Self check-in check-out



Computer Room



Faculty Reading Room

## Central Library Services & Facilities

Circulation service (Issue & Return) RFID Based

Self check-in and check-out

OPAC

Reading rooms for faculty, Resident and UG & PG students.

Newspaper service & Newspaper clipping service

Previous Year Question paper

Computer facilities

Remote access for e-resources

Reference service

Locker facility



## Library OPAC

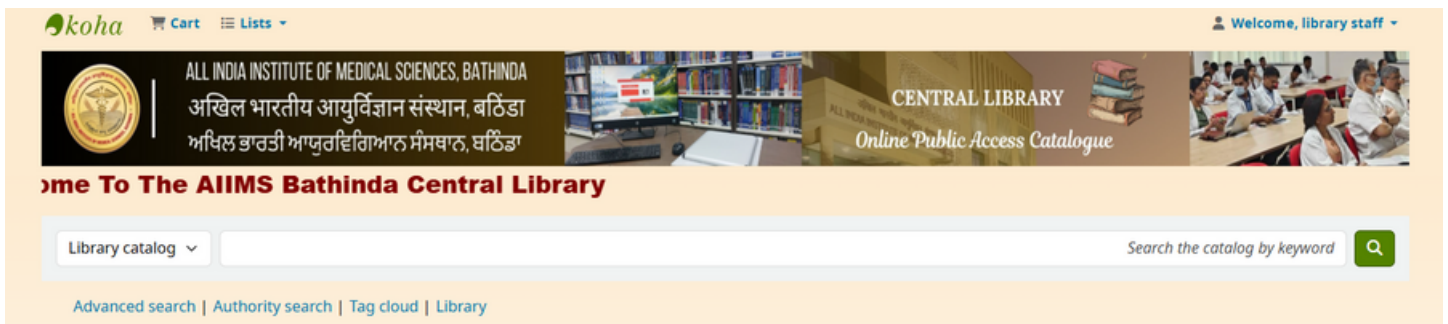


koha's OPAC (Online Public Access Catalogue) allows patrons to search for materials in the library catalog, view item details, placing holds, and manage their accounts. For open Central Library OPAC connect to institute Wi-Fi and **click here !** and scan Qr

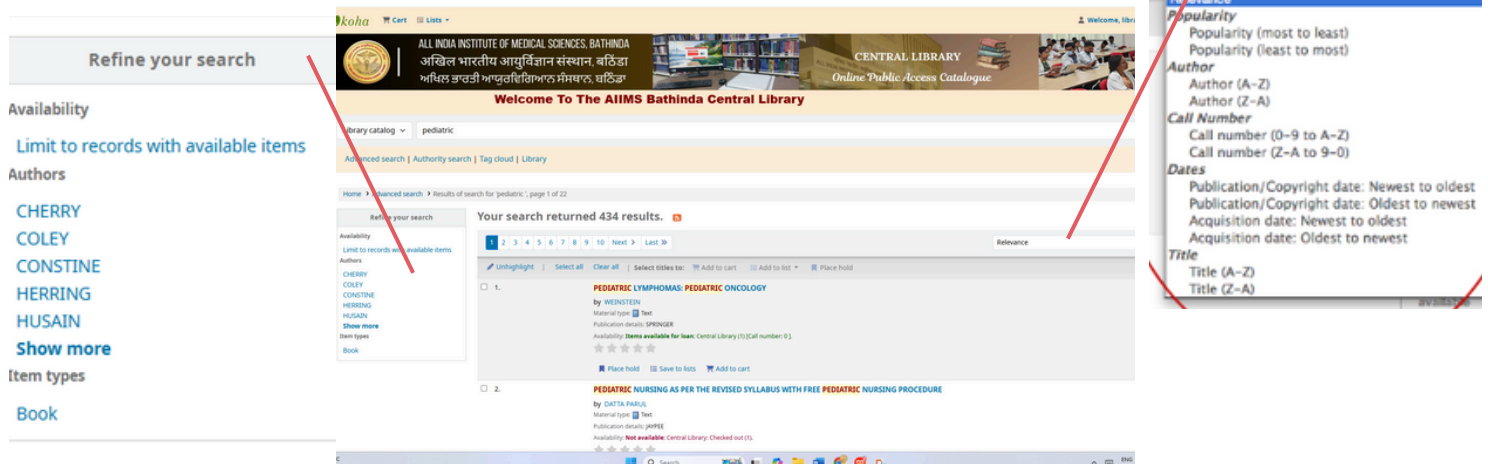


### Key Features of the Koha OPAC:

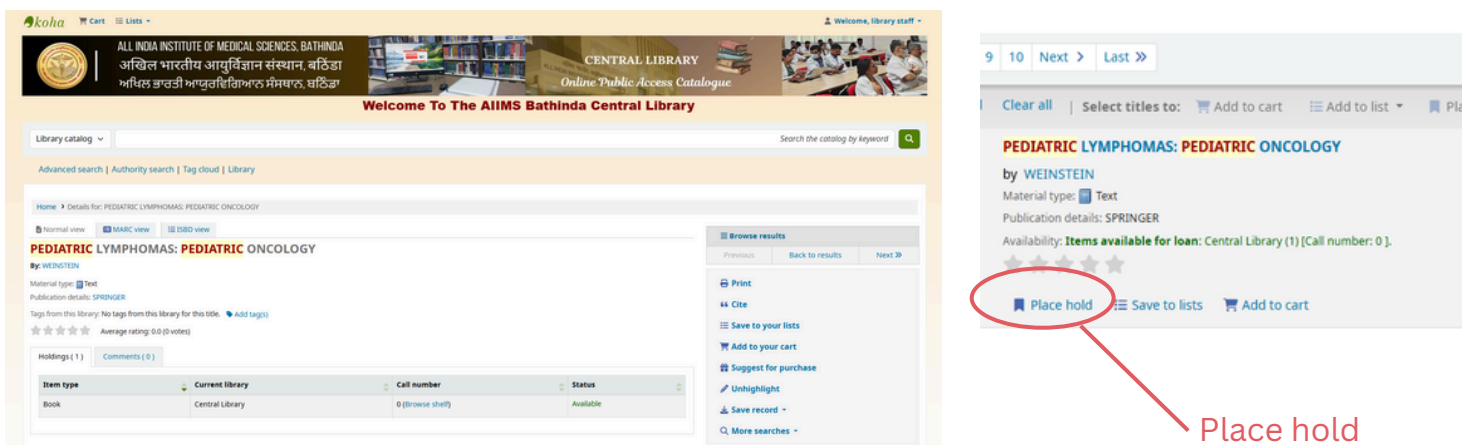
**Searching:** Patrons can search for materials using keywords, subject headings, and other fields.



**Item Details (Results overview):** The OPAC displays detailed information about each item, including title, author, publication date, availability, and location.

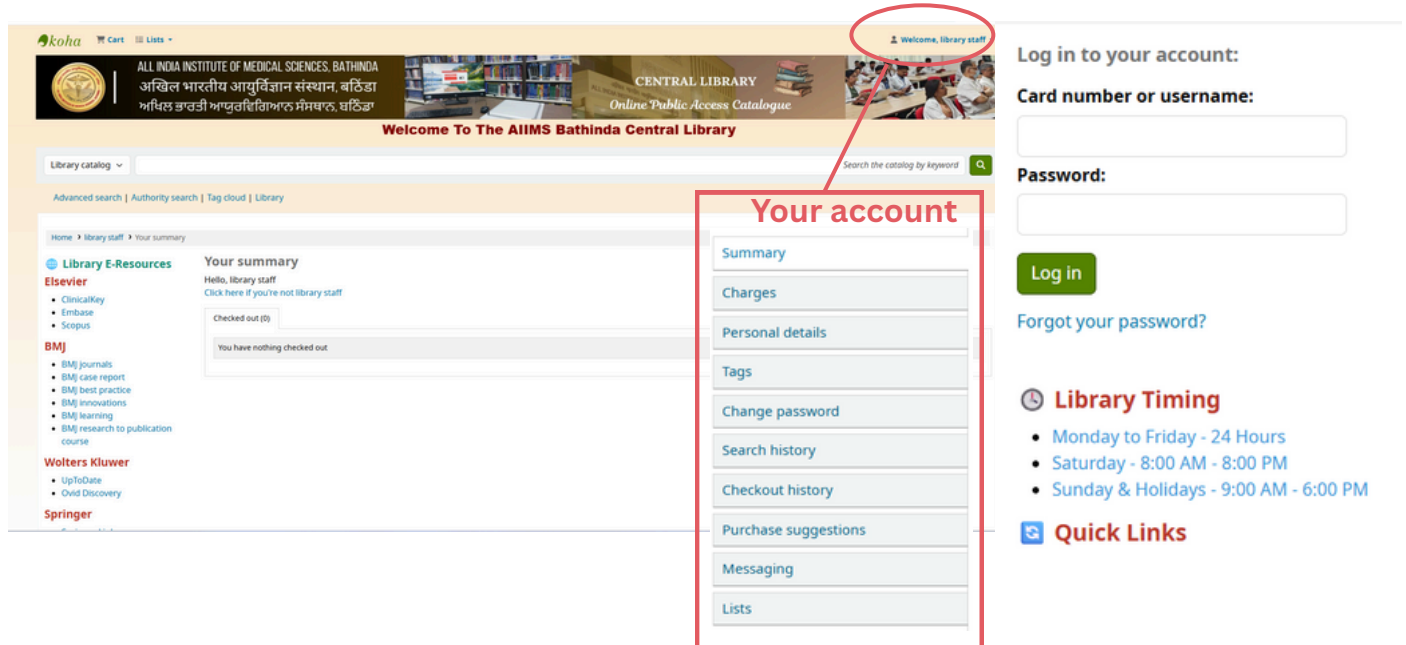


**Placing Holds:** Patrons can place holds on items they wish to borrow, and the system will notify them when the item is available.





**Account Management:** Patrons can log in to their accounts to view their borrowing history, manage their holds, update their information and Renew your books.



**Welcome, library staff**

**Log in to your account:**

**Card number or username:**

**Password:**

**Log in**

[Forgot your password?](#)

**Library Timing**

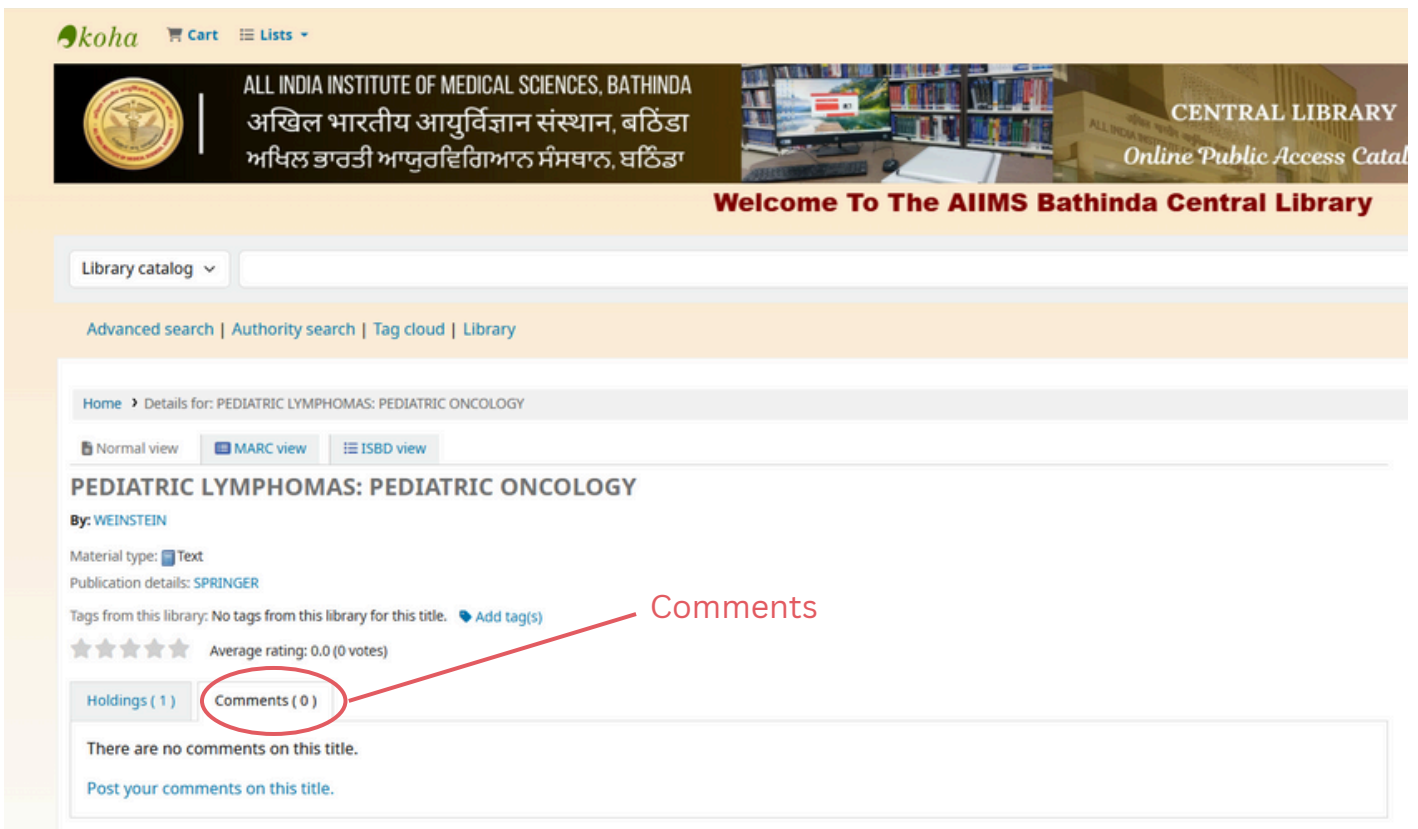
- Monday to Friday - 24 Hours
- Saturday - 8:00 AM - 8:00 PM
- Sunday & Holidays - 9:00 AM - 6:00 PM

**Quick Links**

**Your account**

- Summary
- Charges
- Personal details
- Tags
- Change password
- Search history
- Checkout history
- Purchase suggestions
- Messaging
- Lists

**Comments:** The OPAC can allow patrons to add comments to items, which can be reviewed and moderated by library staff.



**ALL INDIA INSTITUTE OF MEDICAL SCIENCES, BATHINDA**  
अखिल भारतीय आयुर्विज्ञान संस्थान, बठिंडा  
ਅਖਿਲ ਭਾਰਤੀ ਆਯੁਰਵਿਗਿਆਨ ਸੰਸਥਾਨ, ਬਠਿੰਡਾ

**CENTRAL LIBRARY**  
Online Public Access Catalogue

**Welcome To The AIIMS Bathinda Central Library**

**Library catalog**

[Advanced search](#) | [Authority search](#) | [Tag cloud](#) | [Library](#)

**Home** > Details for: PEDIATRIC LYMPHOMAS: PEDIATRIC ONCOLOGY

**Normal view** | **MARC view** | **ISBD view**

**PEDIATRIC LYMPHOMAS: PEDIATRIC ONCOLOGY**

**By: WEINSTEIN**

Material type: **Text**

Publication details: **SPRINGER**

Tags from this library: No tags from this library for this title. [Add tag\(s\)](#)

★ ★ ★ ★ ★ Average rating: 0.0 (0 votes)

**Holdings ( 1 )** | **Comments ( 0 )**

There are no comments on this title.

[Post your comments on this title.](#)

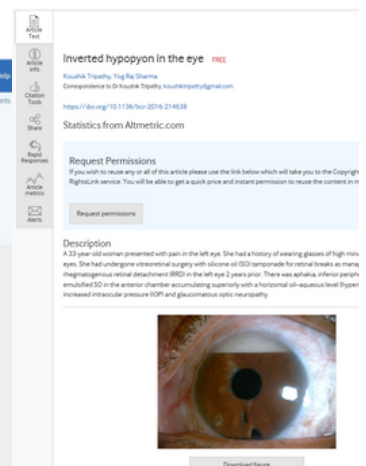
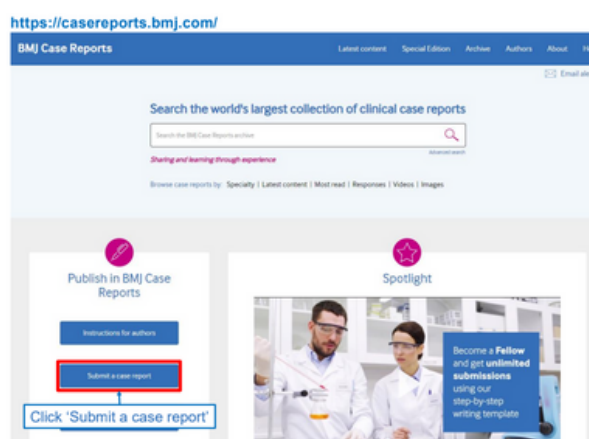
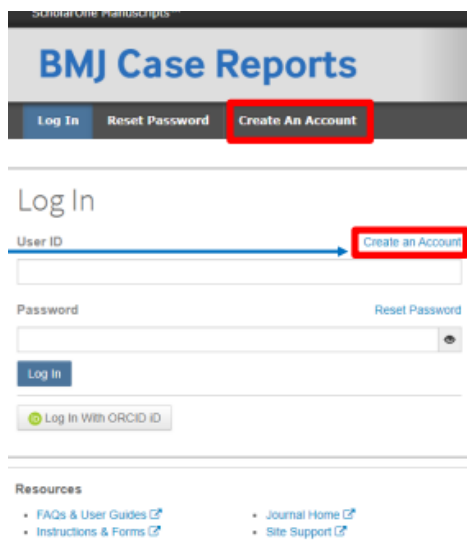


## BMJ Case Reports - How to submit your Case Report

You can submit your Case Report on BMJ Case Report. BMJ Case Report focus that on the causes of ill health, the social determinants of health and access to healthcare services, prevailing local and national issues that affect health and wellbeing, and the challenges in providing care to vulnerable populations or with limited resources.

Link to Know steps of submit BMJ Case Reports:

[https://drive.google.com/file/d/1lvKBuyycg2NhLJV8w-Mvo4NXidMmLW2\\_/view?usp=drive\\_link](https://drive.google.com/file/d/1lvKBuyycg2NhLJV8w-Mvo4NXidMmLW2_/view?usp=drive_link)



## Follow these steps for an “APC waiver” across all of our BMJ journals

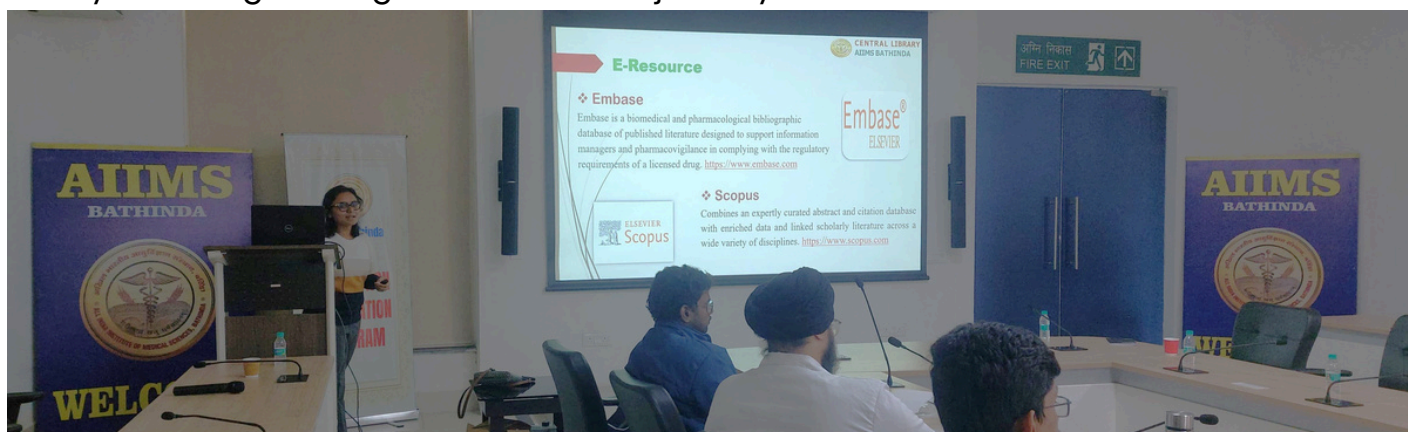
1. Log into [rtp.bmj.com](http://rtp.bmj.com) and complete a minimum of 5 modules
2. Submit your article to one of BMJ’s journals. Once your article has been accepted in one of our journals, Write an email to [apc.journals@bmj.com](mailto:apc.journals@bmj.com) with the reference code mentioned below.
  - a. Use the reference code (Get code from Central Library).
  - b. Name -Email address (the one used for your Research to Publication account)
  - c. Scholar 1 ID (can be found in an email acknowledgement you received upon submission)
3. You will receive a discount code once your email has been reviewed. Apply this discount code to your RightsLink offer email using the ‘apply discounts’ button.



## Orientation program for PG students

**14 Jan. 2025;** The Central Library at AIIMS Bathinda organized an Orientation Program for its Postgraduate (PG) students of January 2025 batch.

The primary aim of this program was to familiarize the newly admitted PG students with the library's resources, facilities, and services, ensuring they make the most of the library's offerings during their academic journey.



The orientation typically includes:

- 1. Introduction to Library Resources:** Students are introduced to various resources like textbooks, journals, e-books, databases, and digital resources available for academic support.
- 2. Library Services:** Information on circulation services, reading spaces, and access to online platforms is shared.
- 3. Library Tour:** A physical or virtual tour of the library to showcase different sections, including study areas, computer labs.
- 4. Library Policies and Guidelines:** Students are made aware of the library's rules and regulations, including the borrowing limit, return policies, and conduct within the library.
- 5. Library E-Resources use:** Students are introduced to various resources like BMJ, Embase, Scopus, UpToDate, iThenticate, Grammarly etc. and research tool SPSS, EndNote.



## Library users Feedback

**Suleman**

MBBS Student 2021

The library is a peaceful and well-maintained space, perfect for studying. It provides a quiet environment that improves focus and concentration. Books are well-organized and easily accessible. Wi-Fi and computer facilities are available for academic use. The staff is helpful and polite towards students. Cleanliness is always maintained in the reading and computer areas.

**Reet Brar**

MBBS Student 2022

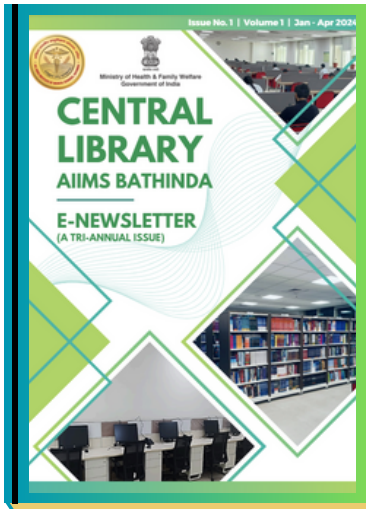
I truly appreciate the resources and the peaceful environment our college library offers. Whether it's preparing for exams, working on assignments, or simply exploring new topics, the library has always been a supportive space. The wide range of books, access to online journals, and helpful staff makes it easier to find exactly what we need and makes learning come alive.

**Tanisha**

MBBS Student 2022

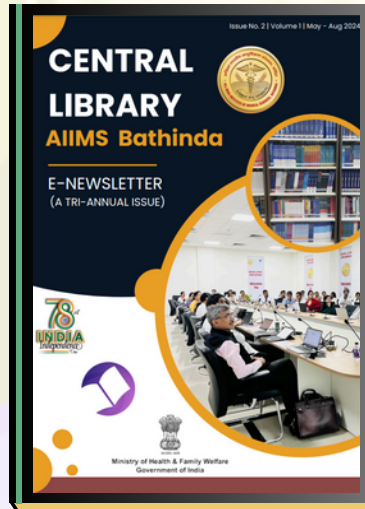
The Central Library of our institute is a hub of knowledge, offering a vast collection of books, journals, and digital resources. Open for extended hours, the Central Library provides a quiet and resource-rich space ideal for focused study and collaborative projects.





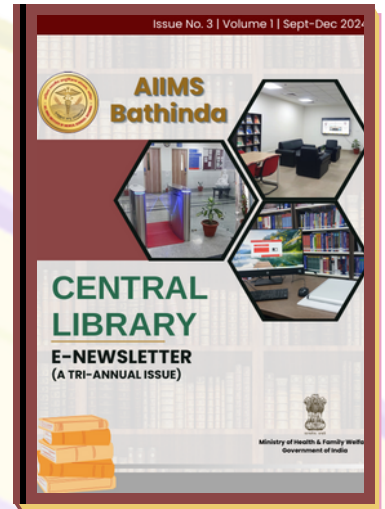
Issue No. 1 | Volume 1 |  
Jan – Apr 2024

Read here >>>



Issue No. 2 | Volume 1 |  
May – Sep. 2024

Read here >>>



Issue No. 3 | Volume 1 |  
Oct – Dec. 2024

Read here >>>

STAY  
CONNECTED  
WITH US!



## Central Library

All India Institute of Medical Sciences, Bathinda

3 floor, C Block, Medical College Building.

Mandi Dabwali Road, Bathinda, Punjab-151001



library@aiimsbathinda.in



0164 286 7865



[https://aiimsbathinda.edu.in/Central\\_library](https://aiimsbathinda.edu.in/Central_library)

Please submit your  
Complaints/Feedback/  
Suggestions on the  
given link



<https://forms.gle/G6iipe37Bx5N6aue7>

**NEWSPAPERCLIPPINGS SERVICE**

STARTED FROM MAY 2024. AIIMS, BATHINDA

**A WEEKLY SERVICE TO KEEP AIIMS, BATHINDA FRATERNITY ABREAST WITH MEDICAL NEWS, MEDICAL TECHNOLOGIES, MEDICAL POLICIES, INTERNATIONAL MEDICAL NEWS AND SCIENCE AND TECHNOLOGY. S. [CLICK HERE!](#) TO ACCESS ALL THE ISSUES.**



**Central Library**  
**AIIMS Bathinda**